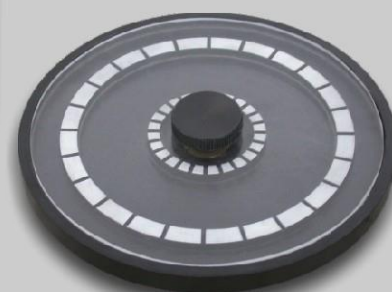


Model: T-15



Rotor of Hematocrite centrifuge

#### SPECIFICATIONS

- Haematocrite Centrifuge Machine, Max. speed 13000 r.p.m.
- Compact body which is made of plastic injection moulded.
- Inner safety bowl made of stainless steel
- Fitted with well balance universal motor having long life with high grade carbons.
- 2 lines of 16 character LCD Display of r.p.m., r.c.f., set and run time.
- Last test parameter recall and displays automatically on LCD.
- Microprocessor based Digital timer of range 0-99 min.
- Preset speed controls thru microprocessor from 2000 to 13000 r.p.m. in interval of 100 rpm

#### Supply completed with following accessories:

- ▶ Micro Hematocrite rotor to accommodate 24 capillaries of 75mm x 1mm or 12 capillaries.
- ▶ Rotor cover made of polycarbonate.
- ▶ Heparinised capillary tubes 75mm long x 1mm bore (Pack of 100 Nos.)
- ▶ Non-Heparinised capillary tubes 75mm long x 1mm bore (Pack of 100 Nos.)
- ▶ Reading device.
- ▶ Sealing wax- 1 tray

Dimension of Machine:	L = 290mm, W = 270mm, H = 240mm
Weight of Machine:	9.5kg. approx.
Dimension of box:	L-355mm x W-355 x H-340mm
Weight of Box	11 kg. Approx.

#### *Special Features*

- Elegant design
- Fitted with anti vibration pads
- Motor remain cool even after running full time
- Very stable
- Low in noise
- Corrosion free outer structure

#### Haematocrite Centrifuge (Brushless)(Without carbon)

Model: T-15BL

- All specifications are same as above but in this model the motor is Brushless (without carbon) but maximum speed 11500 rpm.



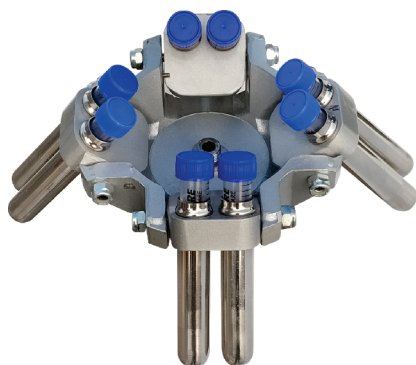
Model: T-15BL

#### Model: T-15BL

- Haematocrit Centrifuge Machine, Max. Speed 12000 r.p.m.
- Compact body which is made of plastic injection moulded.
- Fitted with maintenance free induction motor drive.
- Digital speed control range.
- Speed readout: Direct reading, digital tachometer.
- Safety lid-lock lid.
- Possibility of interrupting the run at any time by & quot, stop key.
- Timer range at least from 1 up to 15 min. in increments of 1 min. or in continuous.
- Possible quick spins.
- Diagnostic program and alarm, indicators (i.e. imbalance, over speed, lid open)
- Compatible with standard capillaries.
- Line voltage 220-240AC, 50-60Hz and fitted with a 13 amp plug.
- Microprocessor based Digital timer of range 10-15 min.
- Preset speed controls thru microprocessor from 2000 to 12000 r.p.m. in interval of 100 rpm.

#### Supply completed with following accessories:

- ▶ Micro Hematocrit rotor to accommodate 24 capillaries of
- ▶ 75mm x 1mm or 12 capillaries.
- ▶ Rotor cover made of polycarbonate.
- ▶ Heparinised capillary tubes 75mm long x 1mm bore(Pack of 100 Nos.)
- ▶ Non-Heparinised capillary tubes 75mm long x 1mm bore (Pack of 100 Nos.)
- ▶ Reading device.
- ▶ Sealing wax- 1 tray



**8 x 15 ml Swing Out**



**Model: PRP-4M**

### Specifications

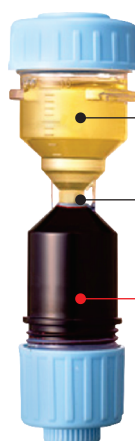
- ✓ Compact P.R.P Test Centrifuge Machine, Microprocessor based, digital.
- ✓ Body made of rust proof ABS Plastic injection moulding with metallic protection bowl.
- ✓ Lid lock for safe drive.
- ✓ 2 lines of 16 character LCD display of r.p.m., for set and run time.
- ✓ Two Programs are feeded in software of machine as per recommended by for P.R.P. Tests.
- ✓ (i) First Program 4 minutes, 3400 r.p.m.
- ✓ (ii) Second Program 2 minutes, 3500 r.p.m. OR  
we can programe speed from 500 to 5000 r.p.m. in variation of 100rpm as per Doctors requirement .
- ✓ Last test parameter recall and displays automatically on LCD.
- ✓ Sample Holding Capacity: 8 sample tubes upto 15 ml.
- ✓ **P.R.P. Kit:** Kit of any brand having capacity upto 15ml tube can be used with our machine.

### Technical Parameters

▶ Motor	Universal Motor (with carbon brushes) 1/8 H.P.
▶ Power	AC 220V 50Hz $\pm 10\%$
▶ Dimension of Machine	L = 395mm, W = 360mm, H = 280mm
▶ Net Weight	12.5 kg. Approx. Gross Weight with box = 14 Kg.
▶ Current	220 volts, 50Hz A.C.



**20 ml  
Syringe Rotor Swing Out**



Plasma

Platelet-Rich Plasma

Red Blood Cells



**Model: PRP-8M**

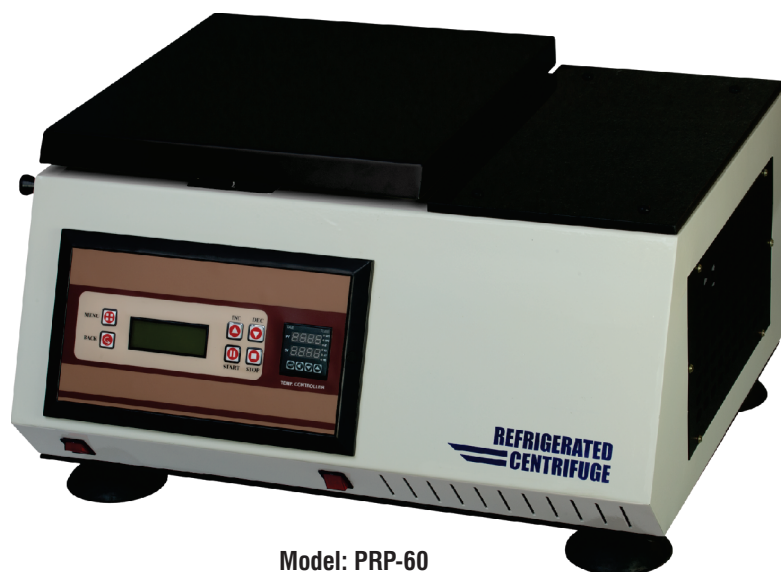
### Specifications

- ✓ Compact P.R.P Test Centrifuge Machine, Microprocessor based, digital.
- ✓ Body made of rust proof ABS Plastic injection moulding with metallic protection bowl.
- ✓ Lid lock for safe drive.
- ✓ 2 lines of 16 character LCD display of r.p.m., for set and run time.
- ✓ Two Programs are feeded in software of machine as per recommended by for P.R.P. Tests.
- ✓ (i) First Program 4 minutes, 3400 r.p.m.
- ✓ (ii) Second Program 2 minutes, 3500 r.p.m. OR  
we can programe speed from 500 to 5000 r.p.m. in variation of 100 r.p.m. as per Doctors requirement .
- ✓ Last test parameter recall and displays automatically on LCD.
- ✓ Sample Holding Capacity: 4 P.R.P. Syringes of 20 ml.
- ✓ **Dr. P.R.P. Kit:** Having 20 ml syringe can be used with our machine.

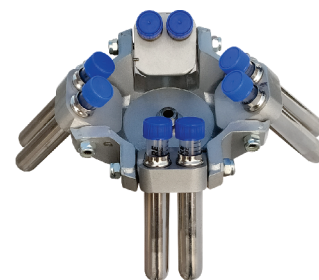
### Technical Parameters

▶ Motor	Universal Motor (with carbon brushes) 1/8 H.P.
▶ Power	AC 220V 50Hz $\pm 10\%$
▶ Dimension of Machine	L = 415mm, W = 360mm, H = 305mm
▶ Dimension of outer box	510 x 510 x 390mm
▶ Net Weight	21 kg. Approx. Gross Weight with box = 23.5 Kg.
▶ Current	220 volts, 50Hz A.C.





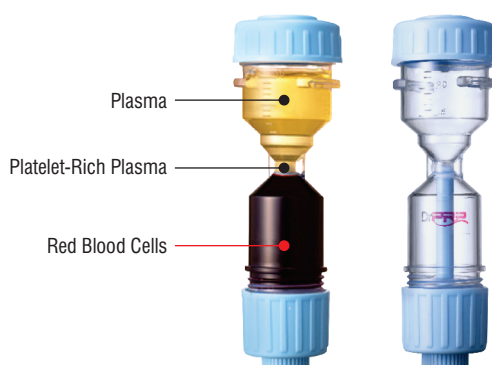
Model: PRP-60



8 x 15 ml Swing Out



20 ml  
Syringe Rotor Swing Out



## Specifications

- ✓ Bench Top universal Refrigerated Centrifuge Machine, all purpose.
- ✓ Heavy duty C.R.C. construction finished with powder coating.
- ✓ Stainless Steel centrifuge bowl for extra protection and easy cleaning.
- ✓ Fitted with well balanced universal motor with having carbon bushes.
- ✓ 2 lines of 16 character LCD display of r.p.m., for set and run time.
- ✓ Two Programs are feeded in software of machine as per recommended by for P.R.P. Tests.
- ✓ (i) First Program 4 minutes, 3400 r.p.m.
- ✓ (ii) Second Program 2 minutes, 3500 r.p.m. OR we can programe speed from 500 to 5000 r.p.m. in variation of 100 r.p.m. as per Doctors requirement.
- ✓ Temp. is controlled from -10°C upto 37°C in intervals of 1°C.
- ✓ P.I.D. Electronic digital temperature controller cum indicator is fitted to control the centrifuge temp.

## Rotors

It will be supplied with two different rotors details as under

- i) 8 Holes of 15 ml Swing Out Rotor
- ii) 4 Holes to hold 4 Dr. P.R.P. Syringe of 20 ml each

## Special Features

✓ **PR.P. Kit:** Kit of any brand having capacity upto 15ml tube can be used with our machine.

✓ Sample holding capacity 4 PRP Syringe of 20 ml. and

**Dr. PRP Kit:** having 20 ml syringe can be used with our machine.